



Your North County Connection

Connecting People, Ideas and Resources!

A regional development association, which acts as a catalyst to define and advocate economic and community development in North St. Louis County.

Spring 2007 Edition

North County Inc. Elects New President Approves New Board Members for 2007



North County Inc.'s Board of Directors has elected Dr. Mark Tranel as president for 2007. Tranel is succeeding Richard P. Dorsey, who served as NCI's president in 2006.

Dr. Mark Tranel is the Director of the Public Policy Research Center at the University of Missouri-St. Louis. He has worked in this

field for 16 years and has been the principal investigator or research project manager on over 60 applied research projects in the metropolitan St. Louis area.

Tranel received both his Masters and Ph.D. from St. Louis University. He has been a resident of the City of Bellefontaine Neighbors in North St. Louis County for over 50 years, where he now resides with his wife, Lucia.

Tranel is a member of the Association for Public Policy Analysis and Management, Urban Affairs Association, as well as numerous local community based and non-profit organizations.

“North County Inc. has made great strides in recent years, reflecting the progress being made in North St. Louis County. I look forward to working with the North County Inc. Board of Directors and the community to implement the strategic plan we developed last year.”

**Dr. Mark Tranel
NCI President**

NCI welcomes new board members: Kim Bakker of SSM DePaul Health Center, Mike Favazza, CPA of Favazza & Assoc., Daniel Mears, CECD of the City of Hazelwood, Mayor Carrie Cafazza of the City of St. Ann, Kent Miller of Kent Miller Photography, and Mayor Norm McCourt of the City of Black Jack.

See pg. 5 for the complete 2007 Officer & Board report.

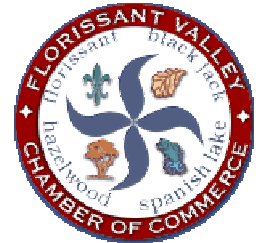
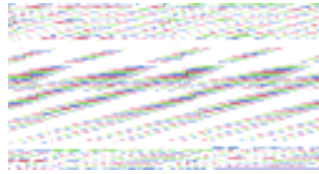
In this issue:

1 NCI Elects New President

2 Leaders Converge at Legislative Reception for North County

6 Kudos & Congrats

7 Annual Breakfast



Reception Featured Legislators Representing North County



Sherry Ulbrich, Rep. Clint Zweifel, Larry Perney & Rebecca Zoll

More than 200 community, civic and business leaders attended the Legislative Reception for North County, Thursday, February 22, 2007 at Christian Hospital. This collaborative event, representing more than 1,000 area businesses, civic and community organizations, was hosted by NCI, the Florissant Valley Chamber of Commerce, the Northwest Chamber of Commerce, and the North County Chamber of Commerce.

The reception allowed area leaders to hear from our State legislators about matters affecting North County and the State of Missouri. Program moderator, Ann Brand from St. Louis Community College at Florissant Valley, presented the 2007 North County legislative priorities on economic development, education, healthcare, transportation, and general issues. State legislators in attendance were: Senators Joan Bray, Rita Heard Days, and Representatives Tony George, Gina Walsh, Jake Zimmerman, and Clint Zweifel.

Thanks to St. Louis Community College-Florissant Valley for publishing the event invitations.

A special thanks to Christian Hospital for hosting the 2007 Legislative Reception



Rep. Gina Walsh & Senator Rita Days



Rep. Gina Walsh, Rep. Jake Zimmerman & Robert Doerr



Tom George & Rep. Tony George



Rep. Tony George, Rep. Gina Walsh, Senator Rita Heard Days, Rep. Clint Zweifel and Senator Joan Bray



Paul Macek and Ann Brand

NCI 2007 Legislative Agenda



Economic Development

Local Economic Development Activity

- The State should support local Economic Development Organiza-

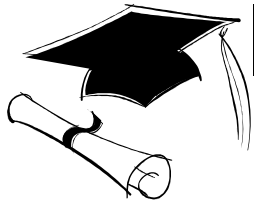
tions through matching funds or saleable credits that would encourage local organization investments in business retention and expansion, entrepreneurial development and small businesses development.

Business Retention and Expansion

- Support DED retention enhancement and a commission (with members of well-qualified organizations such as MEDC and others who support economic development initiatives) that would decide when retention incentives should be offered to a particular Missouri company.

Supplier Tax Credit

- Support the exploration of an incentive to encourage businesses to attract their suppliers in MO.



Education

Funding

- Support appropriations for public schools sufficient to fully fund the Foundation Formula and

reduce the number of years to phase in the full funding of the new Formula.

- Support equitable funding of educational facilities.
- Oppose further mandating of programs until all current programs are fully funded.
- Support legislation mandating accurate property assessments.
- Support legislation offering greater financial assistance to local education agencies to improve the quality of and access to pre-kindergarten education programs. In addition, we endorse the consolidation of responsibility for early childhood education programs to the Department of Elementary and Secondary Education.
- Oppose voucher, tuition tax credits, or any other program that would divert public funding into private institutions and be detrimental to our public school systems.

Autonomy

- Support of the local autonomy of school districts.
- Oppose efforts to impose new restrictions upon the authority of local school districts.

Job Training

- Support protection of existing state appropriations for job training and making programs more accessible.

Investment-Based Incentives

- Support the exploration of an incentive program that would recognize and encourage increased investment by a company.

Entrepreneurial Development

- Encourage further funding enhancements in this critical area.

Small Businesses

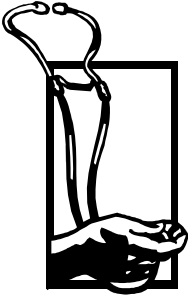
- Support the development of an appropriate assistance program for small businesses.

- Oppose legislation that would erode local control of public schools and destroy teachers' associations.
- Oppose legislation that does not add any funding to schools, yet increases State control and mandates.

Higher Education

- Oppose further cuts to higher education, as St. Louis Community College at Florissant Valley and the University of Missouri-St. Louis play a vital role in the vitality and economic development of our area, particularly in partnership with developing and attracting Plant and Life Sciences companies, and expanding manufacturing and engineering interests within our region.
- Support a State funding formula for the University of Missouri-St. Louis that is relative to other public campuses and reflects the importance of the St. Louis region on the State's economy and well-being. We support increased funding for UMSL to correct system-wide equity issues. We support funding for the continued implementation of the campus master plan toward the completion of the Business, Technology, and Research Park.

NCI 2007 Legislative Agenda



Healthcare

Medicaid

- Support Medicaid program maintaining the safety net for those who cannot afford health insurance.
- Support program adequately reimbursing health providers, including dentists, increasing access to care as more physicians accept Medicaid recipients.

The availability of primary care physicians to serve this population will promote preventive care, alleviating the use of hospital emergency rooms for non-emergency care, and long-term, creating a "healthier state."

- Support Medicaid Reform providing for mental health parity for both adults and children.
- Support reform encouraging use of generic drugs and mandate the State also work with the federal government on legislation changes needed to negotiate drug costs.
- While the Medicaid program is set to sunset in 2008, we support the extension of the date to allow time to create a viable program.

Certificate of Need

- Oppose repealing the Certificate of Need. Niche providers focus on only the most profitable services, attacking hospitals' major revenue streams, making it difficult for hospitals to sustain services, such as emergency rooms and trauma centers.

Emergency Preparedness

- Support legislation that will provide liability protection from civil lawsuits to doctors, nurses, and health care workers who are deployed in response to state emergencies. Provide liability protection for corporations and individuals who volunteer their resources and assistance in response to a state emergency.

Trauma Centers

- Support of additional funding for trauma centers to maintain high-quality health care services.

Health Care Coverage

- Support of pooled-purchasing associations to offer self-insured coverage under ERISA to small businesses, individuals, the self-employed and municipalities.
- Support above line deductions for individuals who pay their own health insurance premiums.
- Reform the medical malpractice liability system.
- Oppose the unreasonable expansion of liability to employers.
- Oppose new mandates that undermine employers' abilities to provide high-quality health insurance at a reasonable cost to employees.



Transportation

Funding

- Support fair and equitable distribution of transportation funding.
- Encourage the consideration of economic development and job creation impact when funding future projects. Support emphasis on maintenance of existing infrastructure.
- Oppose efforts to redistribute money away from the St. Louis region.
- Support of a dedicated, reasonable, and equitable source of State funding for multi-modal forms of transportation. Metro should be efficient and held accountable for use of taxpayer dollars.
- Support of a one time only \$20 million operating expense appropriation for Metro.
- Support consideration of various forms of user fees as one source of new funding.
- Oppose a statewide sales tax for the Transportation Department, as many highway users would not pay anywhere close to a fair share of this tax.



General Issues

TABOR ("Taxpayers' Bill of Rights")

- Oppose TABOR due to the harm to it would cause to our schools, shifting of burden to local level and loss of federal money and decrease in business growth.
- With Hancock and Hancock 111 make TABOR unnecessary because they already limit the amount state government can grow to a percentage of personal income growth and a significant tax increases require a vote of the people.

Predatory Lending

- Support the condemnation of predatory lending practices, such as loans with an excessive rate of interest, added fees, balloon pay-off requirements, flipping, refinancing practices, which strip homeowners of their equity, misleading sales practices, or other predatory practices, which create an increase in home foreclosures.

2007 North County Incorporated Leadership

Officers

President – Dr. Mark Tranel, Public Policy Research Center, University of Missouri-St. Louis
Vice President & Treasurer – Lillie Dumas, Commerce Bank
Secretary – Diana Weidinger, Florissant Valley Chamber of Commerce
Past President – Rick Dorsey, Ahlheim & Dorsey

Executive Board

Mayor Jack Agnew, City of Dellwood (Transportation & Infrastructure Chair)
Lowell Girardier, Girardier Building and Realty Co.
Karen McKay, Hair Benders (Marketing Chair)
Dan Mears CEcD, City of Hazelwood (Economic Development Chair)
Terry Proffitt, Proffitt Enterprises (Educational Critical Issues Chair & North County School/Business Partnership Representative)
Dr. Carolyn Pryor-Luster, Serenity Women's Health Care (Health Care Taskforce Chair)
David Reed, St. Louis Mills
Jeffrey Spiegel, Ferguson-Florissant School District
Fletcher Wells II, St. John's Bank & Trust Co.

Board of Directors

Mayor Jack Agnew, City of Dellwood
Kim Bakker, SSM DePaul Health Center
Everet Ballard, St. Louis County-Executive Office
Mayor Virginia A. Bira, City of Vinita Park
Milton Bischof, Trinity Catholic High School
Brenda Bobo-Fisher, Region Wise Community Initiative
(Inclusion Taskforce Committee Chair)
Ann Brand, St. Louis Community College
at Florissant Valley
Mayor Carrie Cafazza, City of St. Ann
Mayor T.R. Carr, City of Hazelwood
Donny Carroll, Missouri Career Center
The Honorable Rita Heard Days, State Senator
Richard P. Dorsey, Ahlheim & Dorsey
Lillie Dumas, Commerce Bank
Mike Favazza, CPA, Favazza and Associates, LLC
Craig Felzien, AT&T, Missouri
Chief Michael Gantner, Black Jack Fire Protection Dist.
Dora Gianoulakis, Spanish Lake Community Assoc.
Lowell Girardier, Girardier Building & Realty Company
Patty Gould, Pattonville School District
Pamela Hollenberg, City of St. John
Mayor Robert Lowery, City of Florissant
Paul Macek, Christian Hospital
Mayor Norm McCourt, City of Black Jack
Karen McKay, Hair Benders
Daniel Mears, CEcD, City of Hazelwood
Kent Miller, Kent Miller Photography

Jean Montgomery, North County Chamber
of Commerce
Mayor Jim Murphy, City of Normandy
Walt Nelson, Village of Bel-Nor
Howard Nimmons, Howard Nimmons CPA/PPS, CFP
John O'Mara, Plumbers & Pipefitters Local 562
Shirley Paro, City of Bellefontaine Neighbors
Larry Perney, Northwest Chamber of Commerce
Terry Proffitt, Proffitt Enterprises
Carolyn Pryor-Luster, M.D., Serenity Women's
Healthcare, Inc.
David Reed, St. Louis Mills
Representative from Riverview Gardens School Dist.
Thomas Schneider, City of Florissant
Joe Schulte, Schulte's Appraisal Services (retired)
DéCarlton Seewood, City of Ferguson
Jeffrey Spiegel, Ferguson-Florissant School District
The Honorable Michael Spreng, State Representative
Tony Stephens, Jamestown Mall
Dr. Rance Thomas, John Knox Presbyterian Church
Kedra Tolson, University of Missouri-St. Louis
Dr. Mark Tranel, Public Policy Research Center
Sandra Weber, U.S. Bank
Diana Weidinger, Florissant Valley Chamber
of Commerce
Fletcher E. Wells II, St. John's Bank & Trust Company
Dr. Chris Wright, Hazelwood School District

Kudos and Congratulations to Our Members

Alberici Corp. on earning the Green Building Initiative's Four Green Globes rating for its LEED platinum rated headquarters.

The **City of Bellefontaine Neighbors** on a new \$21 million QuikTrip Kitchen facility, and on the reuse of the former K-Mart that is being converted into a storage facility.

NCI Board Member, **City of Hazelwood's Mayor T.R.Carr**, on being named to the Board of Directors for the East-West Gateway Council.

Child Center-Marygrove for honoring IBM's Joyce Blackwell at their annual Appreciation Dinner.

Congrats to **John Shaw, Ferguson's** new city manager.

The **City of Florissant** for recognizing residents of the city currently in the Armed Forces, or who have already served.

Emerson Electric, on their new wireless technology for oil refineries and other manufacturing plants, which is reported to represent more than \$100 million worth of business for the company.

NCI Board Member, **Ferguson-Florissant School District Superintendent Jeff Spiegel** for being named the St. Louis Region New Superintendent of Schools for 2007 by the Missouri Association of School Administrators.

The **Florissant Valley Chamber of Commerce** on naming Harry Behlmann their Business Person of the Year.

Florissant Valley Jaycees' John Vogt on being named president for 2007.

The **Great Rivers Greenway District** on receiving a "Sold On St. Louis" Award.

The **Lambert-St. Louis International Airport** expansion for winning a Best Project of the Year-Overall of 2006 Award, from *Midwest Construction Magazine*.

John Londoff, Sr., chairman and CEO of **Johnny Londoff Chevrolet**, for receiving GMAC's Champion of Life Award for business and community service excellence.

Kent Miller Photography's Kent and Vicki Miller, recipients of Photographic Craftsmen degrees from the Professional Photographers of America.

Normandy School District's Cynthia Henagan Veal and Laurindo Crockett for their inductions to the National Honor Roll's Outstanding American Teachers.

Northwest Chamber of Commerce's Sherry Ulbrich on being named the Chamber's Chairperson.

North County Chamber of Commerce's Bob McGartland, for being named Businessperson of the Year, and Cathy Bono for being named Citizen of the Year.

Pattonville School District on its sixth consecutive Distinction in Performance Award from the Missouri Department of Elementary and Secondary Education.

People's Health Centers, Inc.'s Betty Jean Kerr for celebrating 30 years of service to the uninsured and underinsured.

St. John's Bank for its generous donation to the St. Martin's Child Center.

Valley Industries' director **Steve Frank** on his retirement, and Congrat's to **Carol Simms** on being named the new director.



Health Care Update



Christian Hospital experienced dramatic growth in 2006, with significant advancements in ser-

services for diabetes, cancer, heart care and neurology.

The Diabetes Institute was established with an outpatient center in North County. The Diabetes Busters mobile unit conducted more than 5,000 screenings in 2006.

The Cancer Care Center was renovated and opened the Cancer Resource Center, the first facility of its kind in this region to bring cancer education and support resources together in one location. National clinical trials allow oncologists to bring the latest in cancer treatment to residents.

Further hospital additions include a cardiologist specializing in electrophysiology and a new Electrophysiology Lab for heart rhythm disorders, and the Neuroscience Center including the Epilepsy Monitoring Unit, one of only a select few in the Midwest.

A 64-slice CT scanner will be added to radiology services to provide a quicker, more accurate diagnosis.

Suburban Journals readers voted Christian Hospital the No. 1 Hospital in North County for 2006.

Welcome to Sandra Van Trease, Christian's new Interim President.

SSM DePaul Health Center is continuously re-investing in its campus and technology to provide the highest quality care to its patients.

In 2006, the hospital opened a third \$14 million medical office building including an ambulatory surgery center and SSM Rehab. A medical spa, book store, oncology store and café will open later this year.

DePaul also opened two new cardiac catheterization labs, a vascular lab, a 670-space parking garage, and completed the ring road around the hospital, improving ease of access.

The hospital opened a dedicated Chest Pain Center to provide faster care to people who may be having heart problems.

In late 2006, they began expanding their endoscopy lab and began a \$7.2 million Emergency Department renovation and expansion. DePaul is the only level-2 trauma center in North County, and this project will double their capacity to accommodate 70,000 patients a year.

DePaul also earned the prestigious 2006 Missouri Quality Award for excellence in organizational performance, leadership, customer service and satisfaction.

You're invited

NCI's
30th Annual
Breakfast

Friday,
May 4
At
7:30 a.m.

St. Louis
Airport
Marriott

Current Sponsors

Presenting

SSM DePaul Health Center

Corporate

Clayco

St. Louis Community College
at Florissant Valley

U.S. Bank

McEagle Properties

Negwer Materials

North County Suburban Journals

St. Louis County Economic Council

University of Missouri-St. Louis



North County Incorporated

Help us celebrate
30 years of service to
North St. Louis County at
our Annual Breakfast

\$35.00 per person

RSVP Today
(314) 895-6241

or

www.NorthStLouisCounty.com

**Sponsorship packages are still
available, call today.**

Supporting

City of Ferguson

Ferguson-Florissant School District

Girardier Building & Realty Company

Hazelwood School District

Independent News

Lindenwood University

Lutheran High School North

Pattonville School District

Paul Cerame Ford/Lincoln-Mercury

Plumbers & Pipefitters Local 562

Public Policy Research Center

St. John's Bank

St. Louis Mills

Trinity Catholic High School

www.HazelwoodDining.com



Mark Your Calendars

Board of Directors

Northwest HealthCare
1225 Graham Road
July 26, 7:30 am

Executive Board

2nd Thursday of the month
NCI Office 7:30 am
350B Village Square Drive

Economic Development

3rd Wednesday of the month
NCI Office 3:00 pm
350B Village Square Drive

Healthcare Taskforce

Meeting Date TBA
NCI Office 5:30 pm
350B Village Square Drive

North County School/Business Partnership

April 10, 11:30 am-1 pm
St. Louis Mills-Sports Street Grill
Call 314-435-2501 for details

Inclusion Taskforce

Meeting Date TBA
NCI Office
350B Village Square Drive

Marketing

3rd Tuesday of the month
NCI Office 3:00 pm
350B Village Square Drive

Transportation & Infrastructure

NCI Office 8:30 am
350B Village Square Drive
April 4, 2007

30th Annual Breakfast

Friday, May 4

7:30 a.m.

**St. Louis Airport Marriott
RSVP Today at 895-6241**

Thanks to Mindy Margrabe for newsletter layout and design and Hazelwood School District for printing this newsletter, Shirley Paro and Karen McKay for pictures.

**Rebecca Zoll, Executive Director
and Newsletter Editor**



North County Inc.
350B Village Square Center
Hazelwood, MO 63042
Phone: (314) 895-6341
Fax: (314) 895-6244
Www. NorthStLouisCounty.com

Your North County Connection!

**30th Annual NCI Breakfast-Friday, May 4, 2007, 7:30 a.m.
St. Louis Airport Marriott's Grand Ballroom**